

RED DOT TRACER

MADE IN THE U.S.A.

THE SHEER, DURABLE MATERIAL FOR COPYING, ALTERING,
DESIGNING AND SCALING PATTERNS

- Sheerness makes tracing patterns easy.
- Dots make measuring quick and accurate.
- Can be sewn together for checking or altering patterns.
- Connecting the dots creates a perfect 1" grid.

DUPLICATING A PATTERN

Make a permanent copy of a favorite pattern by tracing onto Red Dot Tracer. Carefully align the pattern's grain line along a row of dots. Pin securely and trace all lines and markings. Use a medium tip marker for bold cutting lines and a fine tip one for stitching lines.

ALTERING A PATTERN

If a pattern needs to be enlarged, use Red Dot Tracer for the extensions. Determine the amount of alteration needed and, using the line of red dots as guides, cut a piece of Red Dot Tracer 2" longer and wider than the alteration. Be sure the grain line extends across the pattern alteration line. Cut the pattern apart at the alteration line and place one piece on the Red Dot Tracer with the grain line touching a dot and the cut edge following a line of dots. Tape into position. Draw a line on the Red Dot Tracer parallel to the pattern edge. The distance between the drawn line

and the pattern edge should be the amount of the alteration. (diagram A) Place the second pattern piece on the drawn line

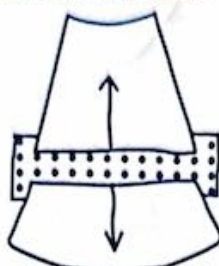


DIAGRAM A

so that the grain line can be reconnected in a straight line. Tape into position and connect the pattern lines, making any appropriate corrections.

MAKING A FITTING SHELL

Trace the stitching lines of the main pattern pieces onto Red Dot Tracer being sure that the grain lines follow a line of dots. Trace the grain lines too. If the pattern will need enlarging, cut wider-than-normal seam allowances. Machine baste, following stitching lines carefully. Try on the fitting shell with the seams on the outside for easy adjustment. Correct the fit and mark any new stitching lines with a different color. Remove basting and make corrections.

Make the same corrections in corresponding facing, lining and interfacing patterns. If corrections are extensive, make a second fitting shell to check your work. (diagram B)

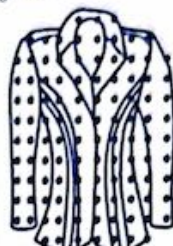


DIAGRAM B

CREATING NEW PATTERNS

A creative sewer may want to use a favorite design feature on a different pattern. For instance, the neckline from one pattern may be transferred to another pattern using Red Dot Tracer.

Place the center front lines of the patterns directly on top of one another, matching the waistline positions. Pin patterns together. Place a piece of Red Dot Tracer on top with a row of dots over the grain lines. Trace a new pattern using the lines for the shoulder, armhole, side seam and lower edge of one pattern and the neckline from the other. It may be necessary to make a small

correction where the new neckline and shoulder meet. (diagram C)

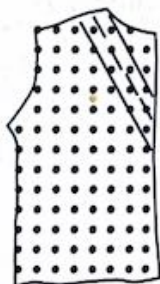


DIAGRAM C

To create a totally new neckline, draw directly on the pattern using Red Dot Tracer for extensions, or draw on a fitting shell made of Red Dot Tracer. When working on a fitting shell, it is best to work on one side only and then trace the new neckline onto the other half so left and right sides are the same.

Test any new pattern before cutting expensive fashion fabric by making a fitting shell. Make new facing patterns by tracing the lines of the new neckline on Red Dot Tracer. Draw another line 2 - 2 1/2" from the stitching line, following the shape of the neckline, (diagram C) The dots help keep the grain lines the same on corresponding pattern pieces.

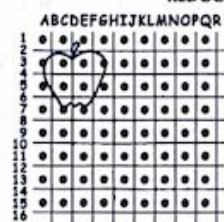
ENLARGING AND REDUCING PATTERNS

Craft publications often include patterns to be enlarged. These patterns are printed on grids where each square represents one square inch. By connecting the red dots horizontally and vertically, Red Dot Tracer can be transformed into an accurate 1" grid. Working one square at a time, the small size pattern can be reproduced in the larger scale. Using letters for the vertical and numbers for the horizontal, each box in either grid can be identified. (diagram D)

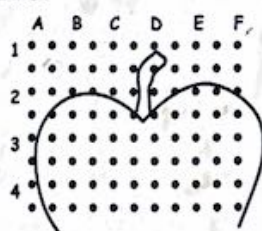
ORIGINAL



REDUCE



ENLARGE



Reductions can be made by reversing the procedure. Drawing a 2" grid on a large pattern and drawing the design, square by square, in a 1" grid will create a half-size reproduction.

These same techniques can be used even if a pattern does not have a grid printed on it. Simply draw a grid on the pattern or on tracing paper and tape it over the pattern.

CONTENTS:

100% spunbonded nylon.

CARE:

Not intended for use as an interfacing, do not wash or dry clean.